



ECOBOT *SCRUBBER 50*

Ingenious Design • Indoor Cleaning Professional



Easy to operate

- ◆ User-friendly APP
- ◆ 30 mins to map a 2000m² site

Auto-charging

- ◆ Automatically return to the charging point when battery is low
- ◆ Automatically dock with the charging dock and start charging if charging dock is deployed

Safety First

- ◆ 20+ sensors enable the Ecobot to perceive the environment, avoid obstacles, and prevent collision

Ingenious design and maneuverable

- ◆ Small turn radius allows it to work in narrow spaces

Efficiency

- ◆ Practical cleaning efficiency is 1200m²/h



Eco-friendly

- ◆ 4-stage filtration, saving up to 70% of water usage

Edge to edge cleaning

- ◆ Accurate locating ability allows edge to edge cleaning and high cleaning coverage rate

Cloud Management System

- ◆ Users can check the status of their Ecobots anytime and receive task reports via email/SMS

ECOBOT *SCRUBBER 50*

Specifications

| | | | |
|---------------------------|------------------------------|----------------------------|--|
| Size | 650 (L) * 600 (W) * 1100 (H) | Maximum Power | 1000W |
| Cleaning Width | 500mm | Rated Driving Motor Power | 2 x 300W |
| Running Speed | 0-3.6 km/h | Rated Brushing Motor Power | 2 x 150W |
| Cleaning Efficiency | Up to 1500 m ² /h | Brush Rotational Speed | Up to 270 RPM |
| Battery | Li-ion | Rated Pumping Motor Power | 280 W |
| Average Run-time | 2 h | Maximum pumping pressure | 18.18 kPa |
| Rated Voltage | 24 V | Sensors | Lidar, Depth Cameras |
| Maximum Operation Slope | 8° | | Ultrasonic sensors, Anti-Collision Strip |
| Fresh Water Tank Capacity | 24L | Weight | 170 KG |
| Recovery Tank Capacity | 18L | Operation Noise | 55-70 dB (a) |

Applicable Sectors



Commercial



Hospitality



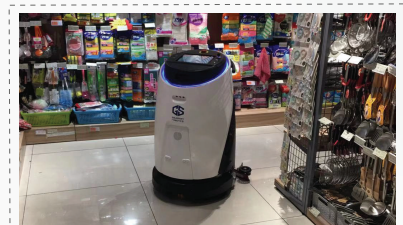
Transportation



Office



Hospital



Retail